

PREMIUM CARPET

SOLUTION DYED NYLON (SDN) CARPET - WHAT IS A SOLUTION DYED NYLON (SDN) CARPET?

The Building Press Publication - Oct 07

SDN refers to how the colour of the yarn is produced. Solution dyeing involves injection of colour pigment into the nylon polymer while it is in a molten state, so that the colour becomes part of the yarn's molecular structure. Simply put ... it's like a carrot and a radish. SDN is like the carrot - ie the colour is all the way through. Space or piece dyeing (as in the case of wool) are like the radish, ie the yarn is white to begin with and then colour is only applied to the outside of the yarn, making it susceptible to fading and at risk of also being lifted during stain removal.

BENEFITS OF SDN CARPET

SDN Carpet has precision colour uniformity and is exceptionally colour-fast and fade-resistant.

Dyeing before extrusion makes the yarn non-porous and therefore incapable of absorbing moisture. This means that spills and liquid accidents cannot penetrate the fibre, but rather sit on the surface making them easier to remove - hence the term Stainproof. Because the colour is all the way through, harsh stains can be removed with what would normally be considered aggressive cleaning techniques, without fear of lifting the colour along with the stain. For example Stubborn stains on Premium Solution Dyed Nylon carpet (PSDN) can be removed with a mixture of 50% Bleach : 50% Water. (NB: Not all SDN carpet quality is such that it can sustain this cleaning method, so seek manufacturer's instructions before attempting!)

In order to get the full benefits from SDN carpet, it is wise to check that the carpet backing is also solution dyed. This ensures that it too carries the same stain-resistant qualities as the carpet, ie doesn't absorb moisture, is resistant to mould and mildew, remains odour-free, and is rot and shrink proof. The backing on all Premium SDN carpet ranges (PSDN) is also made from Solution Dyed fibre. (NB: Carpet treatments such as Scotchguard are topical treatments only and can eventually wear off the outside of the yarn after numerous cleanings.)

NON-ALLERGENIC & ANTI-MICROBIAL QUALITIES

Dust in the air carries germs! The more dust, the more allergens and contaminants. PSDN carpet is manufactured from Bulk Continuous Filament Nylon (BCF) and will not shed or fuzz. To further explain; wool from a sheep can only be produced in a finite length and then it must be joined to another length and so on in order to make a strand of wool suitable for the manufacture of textiles. Shedding and pilling, which is a huge contributor to dust and allergens, occurs where there is wear and rubbing on these joins. Because the nylon in PSDN carpet is man-made, it can be produced in lengths without joins (BCF), therefore no shedding or fuzzing will ever occur. Carpet ranges made from PSDN are also anti-microbial, as they undergo a unique pre-washing process (EcoWash) which

effectively removes natural lubricating oils (used in the manufacturing process), on which microbes may survive.

WHAT SHOULD I LOOK FOR WHEN BUYING A SDN CARPET?

Whilst the above benefits make for compelling reading, not all Solution Dyed Nylon carpet is created equal!

Ensure that you are confident that the warranties associated with specific brands match your requirements, eg wear warranty, manufacturing defect warranty, UV Fade warranty, etc.

Premium SDN (PSDN) is manufactured from the finest quality nylon which is heat-set to keep the fibre stable in order to withstand the weight of both people and furniture. This means that it will retain its appearance and resilience for an extremely long time. An effective test to determine the yarn quality of an SDN carpet, and therefore the quality of its appearance retention, is to rub a small section of carpet between your thumb and forefinger for 10-15 seconds to ensure the nylon polymers do not burst and matt together.

HOW ENVIRONMENTALLY FRIENDLY IS THE MANUFACTURE OF SDN CARPET?

It takes 1 litre of water to produce 1 square metre of Solution Dyed Nylon carpet, compared with 205 litres of water to produce 1 square metre of Woolen carpet. This in itself is a huge improvement towards lessening the impact on our environment.

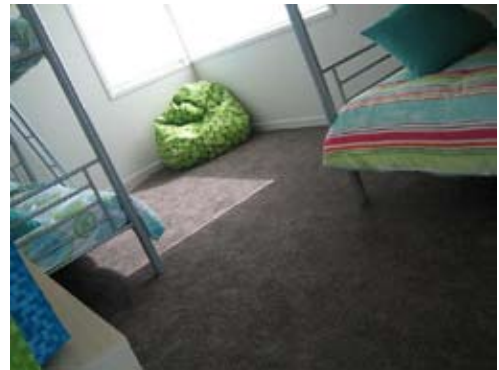
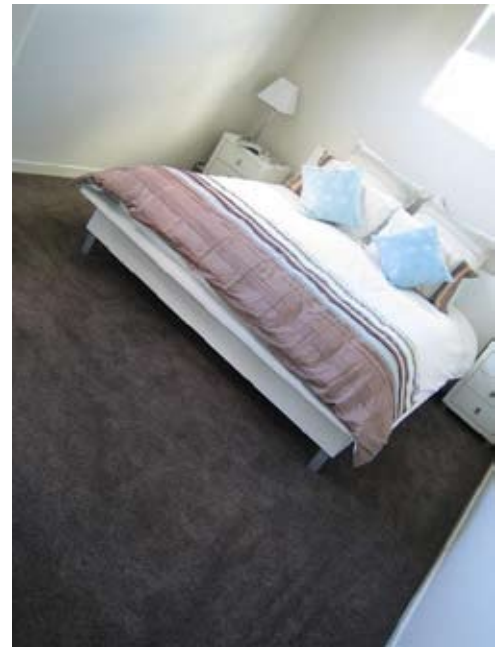
Not all SDN carpet manufacturers are focused on Environmentally Sustainable manufacture. If this is important to you, check that the carpet has been manufactured by a reputable company with current ISO14001 & ISO19001 certification. This international standards qualification focuses on continuous improvements in production and many manufacturers with an environmental conscience engage independent contractors to monitor these improvements.

PSDN carpet ranges are manufactured by a fully certified ISO14001 & 19001 manufacturer.

SUITABILITY

Long gone are the days of cheap and shiny synthetic carpets that squeak when you walk on them! A good quality SDN carpet will have the look and feel of wool, but afford many more attractive benefits to the modern-day consumer. Premium SDN (PSDN) carpet is an excellent choice for all traffic areas (residential & commercial) because it is durable, static-free, stain-resistant and fade resistant.

For more information or retailer details, visit: www.irvineinternational.com or email info@irvineinternational.com.



bring the best home | **Irvine**
INTERNATIONAL

PSDNTM
premium solution dyed nylon